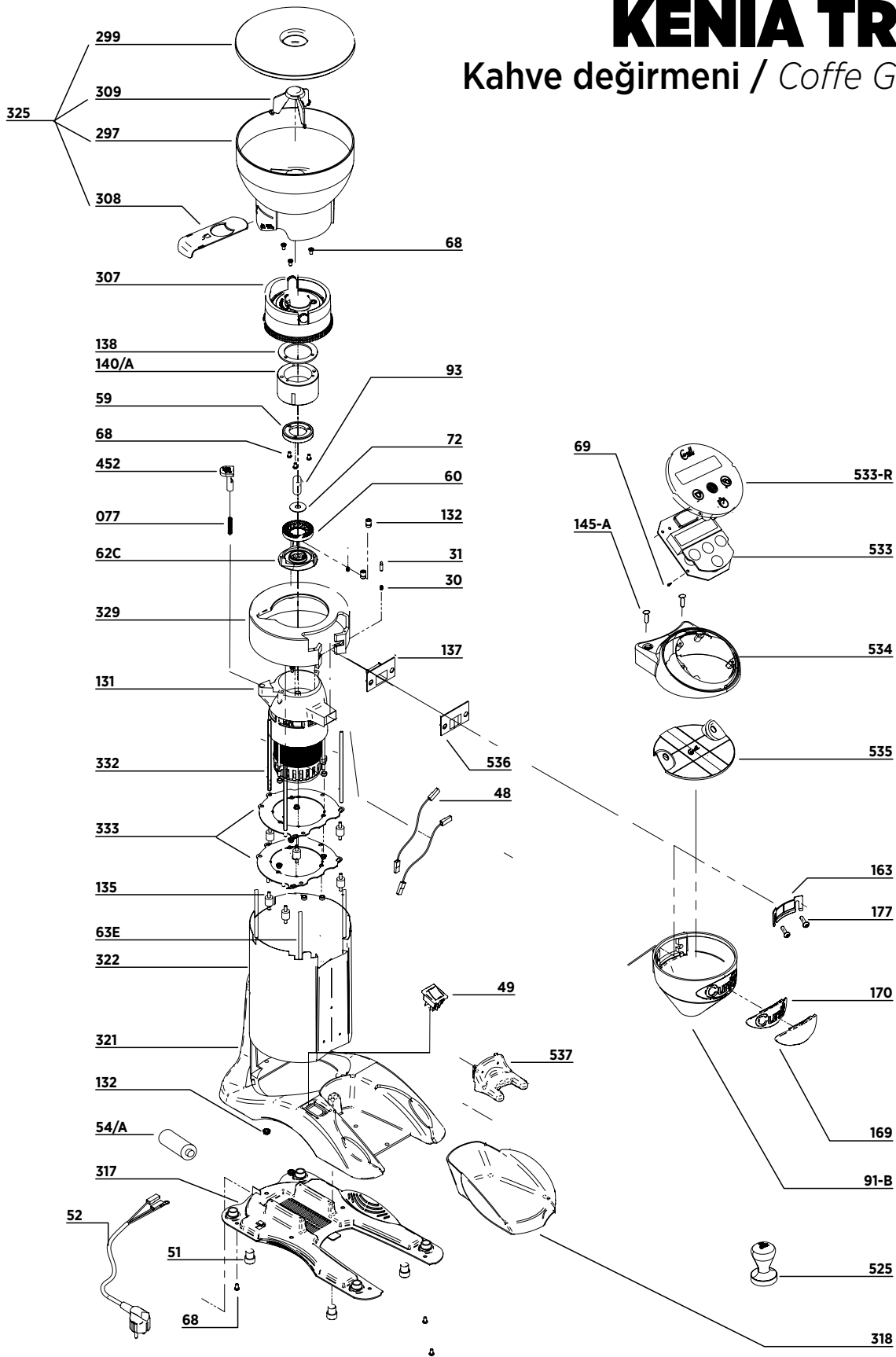


KENIA TRON

Kahve değirmeni / Coffe Grinder



KOD	TANIMLAMA	FİYAT
30	LEVER PAWL SPRING	151,86 €
31	LEVER PAWL	
48	AUTOMATIC MICRO SWITCH CABLES (SET OF 2)	
49	SWITCH WITH PILOT LIGHT	
51	ROUND RUBBER FOOT	
52	HOMOLOGATED CABLE CE	
59	UPPER AND LOWER GRIND WHEEL Ø59	
60	UPPER AND LOWER GRIND WHEEL Ø59	
68	SCREW M5x40 C.C. ADJUSTMENT DISK MOVIE 2008	
68	SCREW M5x12GRINDWHEEL HOUSING HOLDER - DISPENSER OUTLET HOLDER	
69	SCREW R/CH Ø4,2 LOWER COVER BASE HOLDER	
72	LOWER GRIND WHEEL-HOLDER TEMPERED WASHER	
77	ADJUSTMENT PAWL SPRING	
93	NUT WITH SPIRAL (MICH, HAWAI, SALSA)	
131	MOTOR N°9 (325W/1600rpm) 110V-60HZ	
132	SPECIAL NUT M6	
132	SPECIAL NUT M6	
135	SILENT BLOCK	
137	COFFEE OUTLET RUBBER "SILENCER"	
138	ADJUSTMENT DISK RUBBER "SILENCER"	
169	CHROME FINISHED CUSTOMISED PLAQUE DISPENSER/BODY 2006	
297	HOPPER 1KG. (BRASIL-TAURO-FM-UGANDA-RUMBA) - 2008 (ONLY FOR EXPLODED VIEW)	
299	HOPPER COVER - 2008	
307	SET ADJUSTMENT DISK - 2008 (MOVIE)	
308	CLOSING HOPPER PIECE - 2008	
309	HOPPER PROTECTOR - 2008	

KOD	TANIMLAMA	FİYAT
317	LOWER PLATE BRASIL-MARFIL-MICHIGAN - 2008	151,86 €
318	TRAY BRASIL-MARFIL - 2008	
321	BASE BRASIL-MARFIL (INOX) - 2008	
322	ROUND BODY INOX BRASIL - 2008	
325	COMPLETED HOPPER 1KG. (BRASIL-TAURO-FM-UGANDA-RUMBA) - 2008	
329	ROUND COVER IN ALUMINIUM (KENIA-JAMAICA)	
332	DIVIDER M6X194MM (KENIA)	
333	METAL MOTOR SUPPORT PLATE (KENIA-JAMAICA)	
452	NEW REGULATION PAWL 2010	
463		
470		
477		
525	TAMPER - LUXOMATIC 2014	
533	ROUNDED ELECTRONIC BOARD SET - TRON 2016	
534	ELECTRONIC BOARD FRONT - TRON 2016	
535	BOTTOM COVER ELECTRONIC FRONT -TRON 2016	
536	COFFEE OUTLET RUBBER JAMAICA-KENIA TRON 2016	
537	SUPPORT - HOLDER KENIA TRON / JAMAICA TRON - 2016	
140/a	UPPER GRIND WHEEL HOUSING Ø59 (JAMA-UGAN-RU)	
145-A	SCREW R/CH.4,2x45 MOTOR-FAN - AUTOMATIC	
533-R	ROUNDED ELECTRONIC BOARD SET - TRON 2016	
54/A	CONDENSER 10µF (270W-1300rpm) 220V-50Hz (TRAN-TRAN-2-KENIA)	
62C	EXPELLER IN ALUMINIUM -2006 (JAMA, UGAN, MOV, RU, SAL, HAW,MICH)	
63E	THREADED ROD M6x265(KENIA INOX)	
91-B	NEW FUNNEL 2006 (TRAN-MICH)	